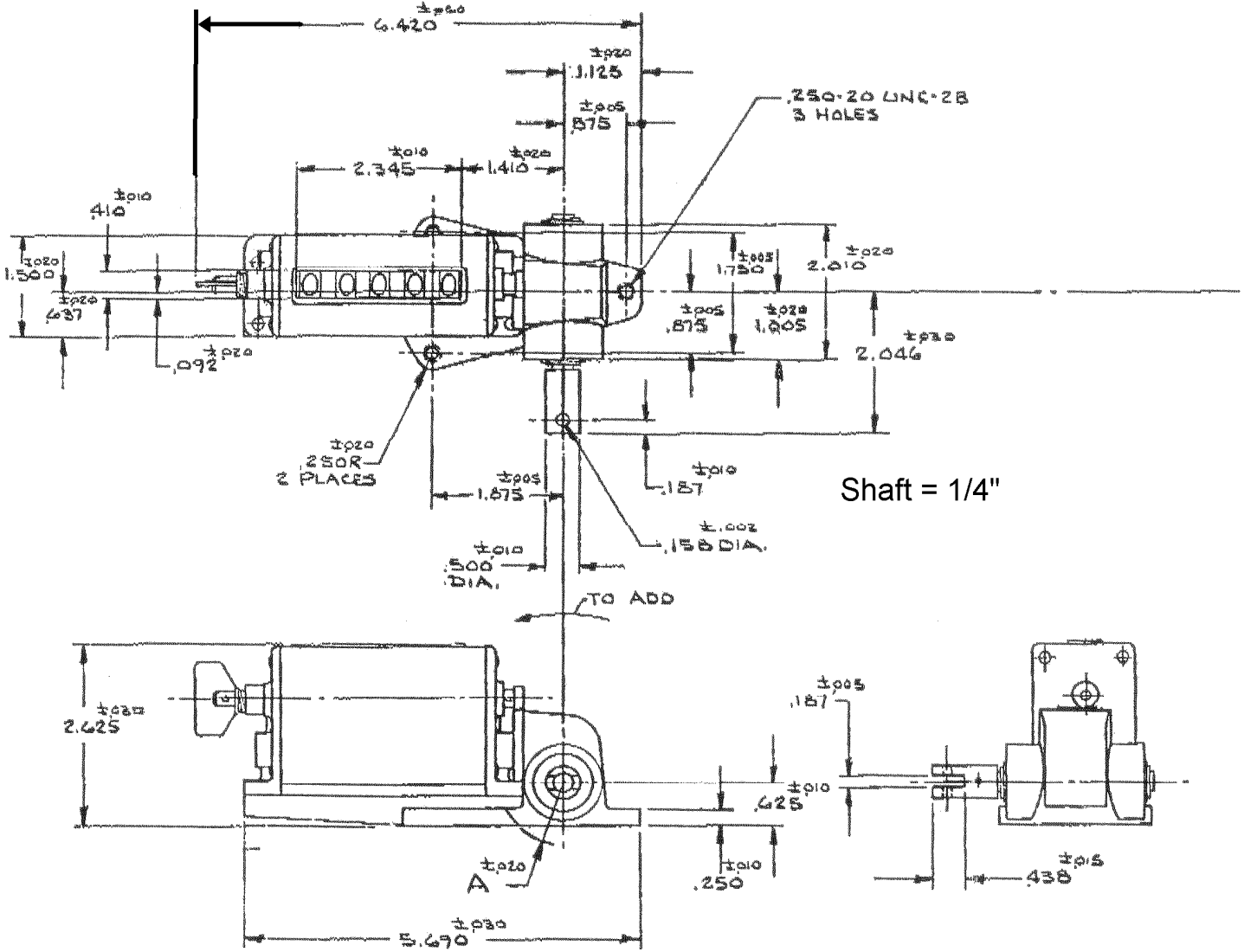
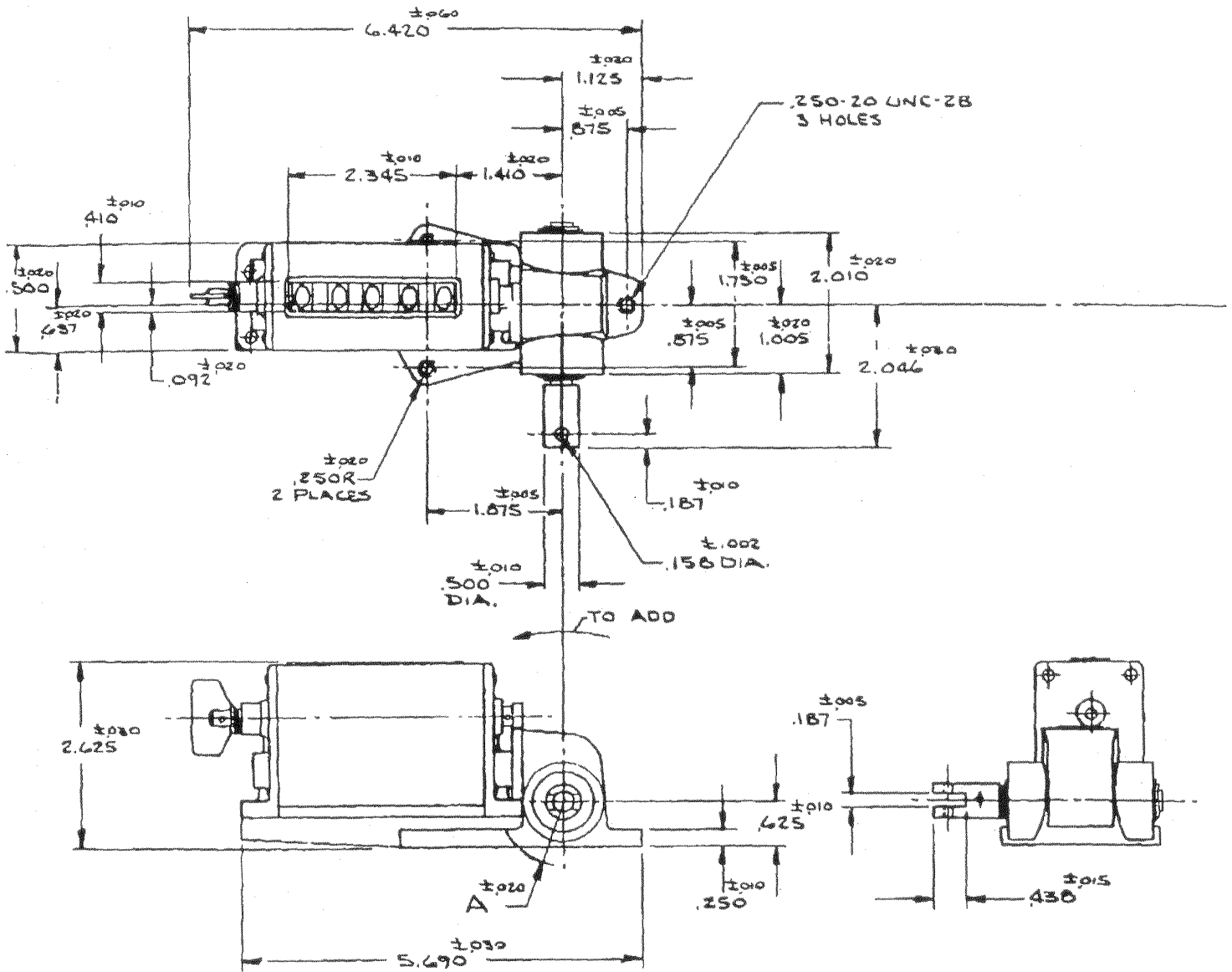


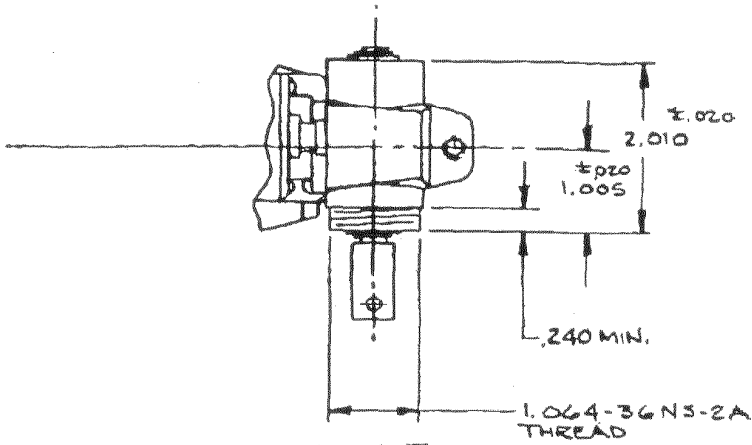
1164 Series



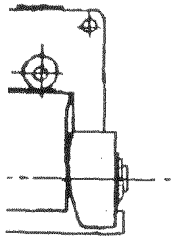
PART NO.	FORM NO.	VIEW Z	RATIO Z	A
328806-001	SRS116425-007	OMIT	1.6	OMIT
328806-002	SRS116425-008	OMIT	0.5 0.5	OMIT
328806-003	SRS116425-010	SEE VIEW Z	0.5 0.5	.875
328806-004	SRS116425-011	SEE VIEW Z	1.6	.875



PART NO.	FORM NO.	VIEW Z	RATIO [Z]	A
328806-001	SRS116425-007	OMIT	1.6	OMIT
328806-002	SRS116425-008	OMIT	0.5	OMIT
328806-003	SRS116425-010	SEE VIEW Z	0.5	.875
328806-004	SRS116425-011	SEE VIEW Z	1.6	.875



VIEW Z
328806-003, 004 ONLY



±.015
B

A
OMIT
OMIT
.875
.875

- NOTES:-
- CHARACTER HEIGHT .344 ±.005
WIDTH .250 ±.005
LINE STROKE .060 ±.005
 - INPUT REVS. TO ONE FIG. IN WINDOW
 - CHARACTERS 0-9 WHITE FIGS. ON BLACK BACKGROUND
 - COUNTER WILL ADD AND SUBTRACT IN POSITIVE MANNER. (NO LOSS OF COUNT WILL OCCUR IN EITHER DIRECTION)
 - TO RESET THIS COUNTER FIRST PUSH RESET KEY IN AND ROTATE 1/4 TURN IN A CLOCKWISE DIRECTION. THEN, WHILE HOLDING SHAFT IN, ROTATE IN COUNTER CLOCKWISE DIRECTION FOR APPROXIMATELY 1/2 TURN - CONTINUE ROTATION UNTIL CAM RELEASES SHAFT AT FULL RESET.

DO NOT SCALE DRAWING

MATERIAL	APPROVALS		DATE	NOTICE TO ALL PERSONS RECEIVING THIS DRAWING: THIS DOCUMENT IS THE PROPERTY OF VEEDER-ROOT COMPANY AND IS NOT TO BE REPRODUCED, REPRODUCED IN WHOLE OR IN PART, OR USED FOR MANUFACTURE BY ANYONE WITHOUT VEEDER-ROOT'S WRITTEN CONSENT.
	DESIGNED	REVISION		
	DRAPERS	10-67		
	DRAPERS			
	PRODUCT	A C J	10-67	
FINISHES				
HEAT TREAT	SIMILAR TO			
QUIP. TECH.	BLACK FROM			
PLATE/COAT	SLIPRESIDES			
TEMP. SPEC.	HEAT GROUP			
ENG. REF.	32555	APPROVED	A 31418-003	REVISIONS SHOWN ARE AFTER PLATING SIMILAR PROCESSES & GROSS FINISHING
FORM NO.	FORM NO.	SEE TABLE		

DRAWING	INTERPRETATION	VEEDER-ROOT HARTFORD, CONNECTICUT 06102 U.S.A.
STANDARD	ANSI	
DESIGN-ORG	ILLUSTRATED MECHANICAL	
THIRD ANGLE PROJECTION		
UNLESS OTHERWISE SPECIFIED TOLERANCES:		
FINISH		

INSTALLATION DWG.
HIGH SPEED WORM DRIVEN CTR.
78142 D 328806-001 A
SCALE 1:1 SHEET 1 OF 1

Assembly Drawing: A314118-003 Exterior Dimension Drawing: (4) 328806-002

Parts List: # Assembly Specification: #

Test Specification: # Lubrication Specification: VRS-73495-222

1) Case: BASE MTG. (3 HOLES)

2) Reset (Type) WING NUT Non-Reset

3) Rotation: # 2 Ratio: 0.5

5) Number of Wheels: 5 Right Wheel: G313780-055

Middle Wheel: G313780-055 Left Wheel: G313780-056

Wheel Configuration and Finish: 0-9 VRS-1051-DHW(WHITE ON BLACK)

6) Drive: FORKED COUPLING

7) Register: GEARED 8) Bearing: POROUS BRONZE

9) Mounting Screws: # 10) Counter Finish: VRS-1051-BST

Modify Referenced Assembly as Follows:

- DET. (21) 318926-005, DET. (22) 512900-233,
- DET. (27) 320042-002, DET. (33) 320092-001.
- DET (38) 319834-004 (3 HOLE MTG)
- DET. (34) USE G328061-002 IN PLACE OF G328061-001

Special Features:

SIMILAR TO SRS 116425-002.

Engineering Reference: 37012
 Item Number:

Was Form Number:

SYM	DATE	REVISION	DESCRIPTION	ECC	VEEDER-ROOT				
A	10/20/69		INITIAL RELEASE	08151-2	VEEDER-ROOT INCORPORATED HARTFORD, CONNECTICUT				
B	6-9-70		DET. 21, 22 & 33 CHGD.	08151-6	HIGH SPEED WORM DRIVEN COUNTER				
C	4-14-75		ADDED MARKING INFO.	32825-006					
D	7-17-75		RIGHT & MIDDLE WHL. WAS G313780-011 LEFT WHL. WAS G313780-041	62179-001					
E	1/21/76		ADDED "DET (38) etc"	32935-001	COMPILED	JFF 10/20/69	APPD	AT 5/21/70	
F	3/31/83		SEE HISTORY MICRO FILM	33384-1	CHECKED	1/1	Sheet 1 of 2		
G	4/22/83		SEE HISTORY MICRO FILM	33384-2					
H	10-6-87		ADDED EXT. DIM. DWS.	33555-1	SRS-116425-008				
								REV	H